

[Menu](#)

How to use Fax Forwarding

Published 12/16/2015 02:18 AM | Updated 04/04/2017 04:02 AM | Answer ID 236350

[QR Code](#)

Other users found this answer helpful [👍 Yes 0](#) [Rate this answer](#)

[🖨️ Print](#) [✉️ Email this page](#) [🔔 Notify Me](#)



How do I use Fax Forwarding?

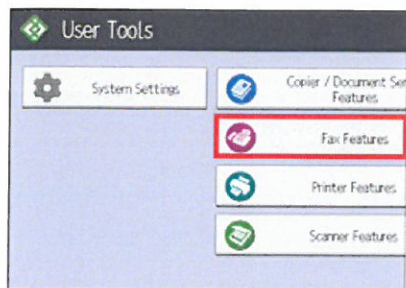
Note



- Screenshots are provided for reference purpose only. Your display may vary depending on the device.

You must first register the forwarding destination in the Address Book. For details, see "[Registering a Fax Destination](#)".

To register two or more end receivers, use group destination. The maximum number of destinations you can register in a group is 500.

1. Press **[Home]** () at the bottom of the screen in the center.
2. Flick the screen to the left, and then press the **[User Tools]** icon ()
3. Press **[Machine Features]**.
4. Press **[Fax Features]**.



5. Press **[Reception Settings]**.
6. Press **[Reception File Settings]**.
7. Press **[Forwarding]**.
8. Select **[On]**.
If there is an end receiver already programmed, a receiver name is shown. If you want to change the receiver, press **[Receiver]** and proceed to step 9.
9. Specify an end receiver using the destination list, and then press **[OK]**.
Press **[Fax]**, **[Internet Fax]**, **[Email]**, or **[Folder]** to switch the transmission type.
10. When you specify an Internet Fax or e-mail destination as a forwarding destination, configure the settings in **[Security]** as necessary.
To encrypt e-mails, press **[Encryption]**.
To attach a signature to an e-mail, press **[Signature]**.
After configuring the settings, press **[OK]**.
11. To print a Forwarding Mark on the forwarded document, make sure that **[Print Forwarding Mark]** is selected.
12. Press **[OK]**.
13. Press **[User Tools]** () on the top right of the screen..
14. Press **[Home]** () at the bottom of the screen in the center.

Note

- When you wish to change the end receivers depending on the senders, specify the end receivers by the senders, at **[Program Special Sender]**.

[Page Top](#)

Further Information