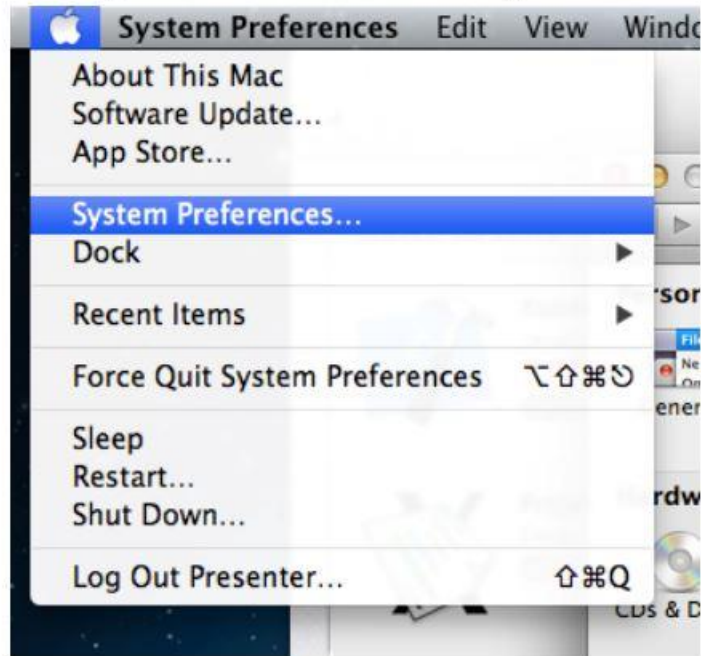
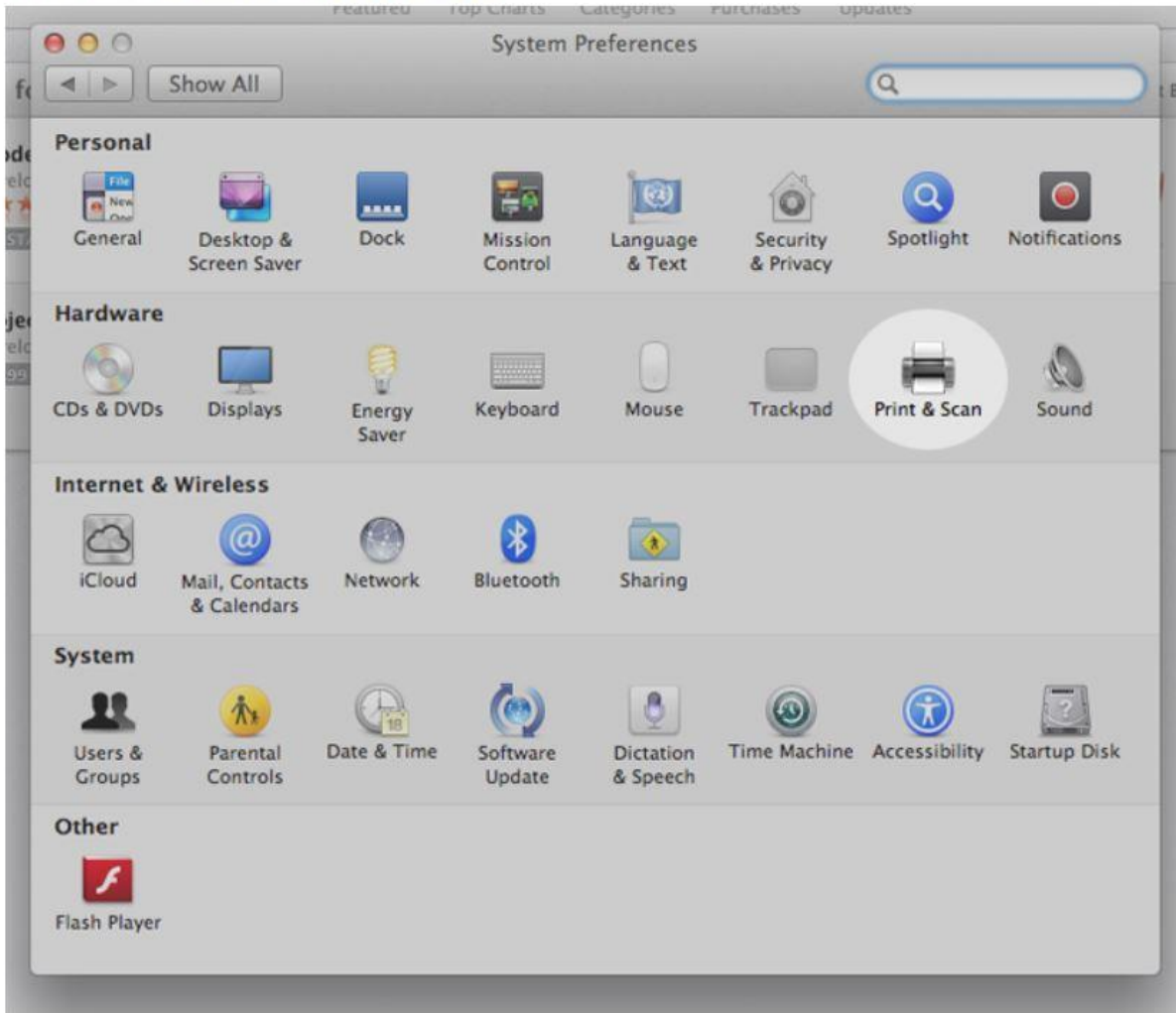


HOW TO SET UP A PRINTER ON A MAC

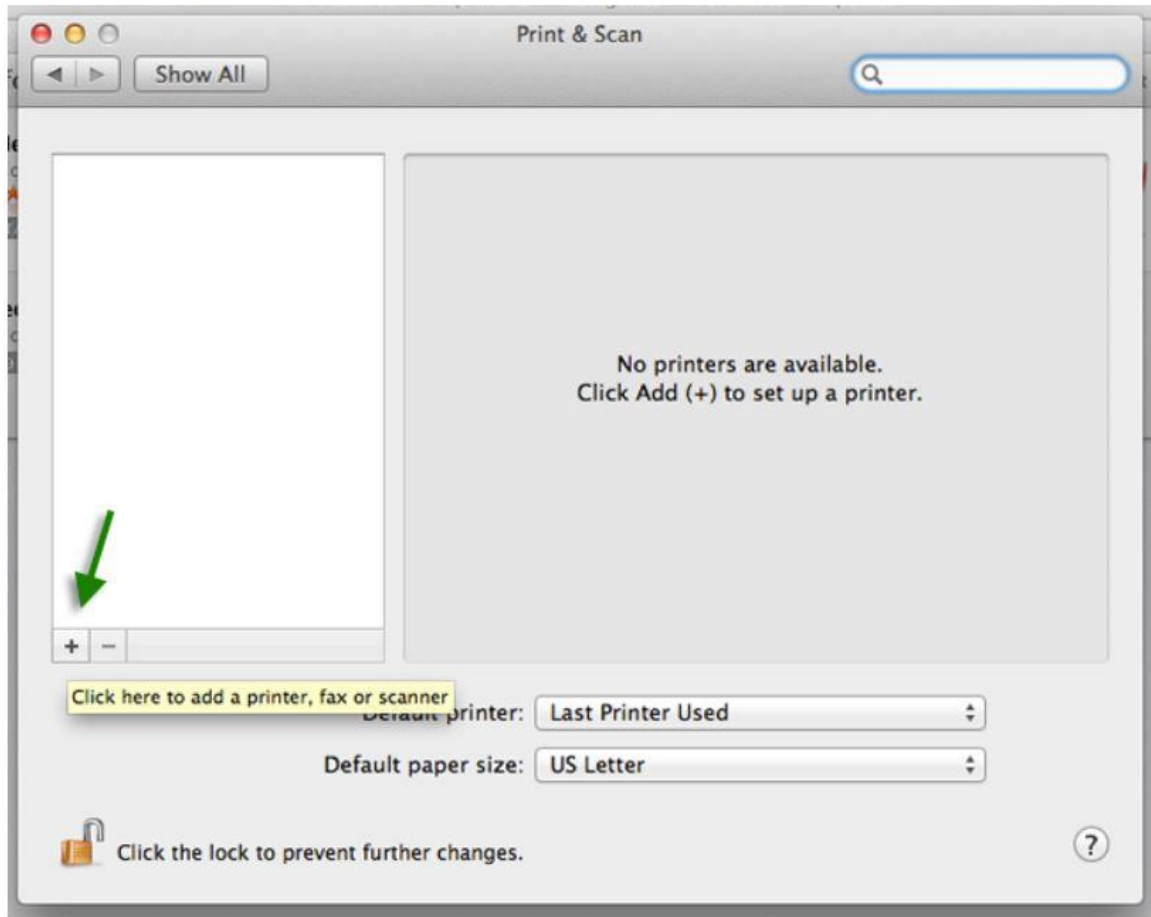
1. Select **System Preferences** from the Apple menu.



2. Double-click on **Print & Scan (Print & Fax)**.

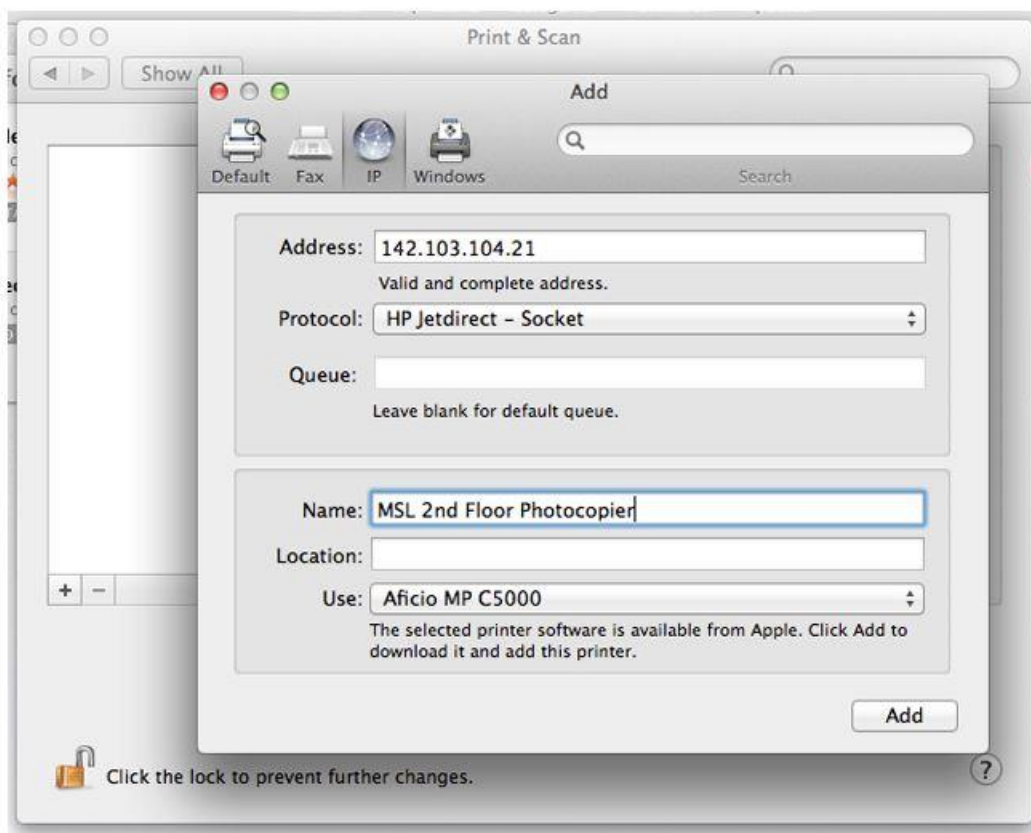


3. In the Print & Scan (Print & Fax) window, *click* on the plus sign button.



4. Click on the **IP** tab in the Print Browser window.

- Set **Protocol** to **HP Jetdirect - Socket**.
- For **Address**, enter the **IP address of the printer you want to add**. IP addresses of MSL printers are available on [the printer list](#).
- Leave the **Queue** field blank. The **Name** and **Location** fields are for your reference to keep track of your printers and differentiate between multiple ones.
- For **Print Using**, do not select **Generic Postscript Printer**. OS X will try to locate an appropriate driver but if it cannot then it is recommended to download the correct driver from the manufacturer. Click on the name of the printer on [the printer list](#) to be taken to the manufacturer's driver download page.



5. Click **Add**. The lab printer will be added to your list of printers.

