

PUBLICATIONS BULLETIN

LANIER RICOH SAVIN

BULLETIN NUMBER: PUB (C) - 152

07/17/2017

APPLICABLE MODEL:

GESTETNER – SEE APPLICABLE MODELS LIST

LANIER – SEE APPLICABLE MODELS LIST

RICOH – SEE APPLICABLE MODELS LIST

SAVIN – SEE APPLICABLE MODELS LIST

SUBJECT: SMBV2/V3 SUPPORT

GENERAL:

This Publications Bulletin describes the specifications and limitations for newly added SMBv2/v3 support for the following applicable Ricoh devices.

APPLICABLE MODELS:

Model Name	Product Code
MP C3004ex	D0AC
MP C3504ex	D0AD
MP C4504ex	D0AE
MP C6004ex	D0AG
MP C2004ex	D0AH
MP C2504ex	D0AJ
MP C3004	D238
MP C3504	D239
MP C4504	D240
MP C6004	D242
MP C2004	D243
MP C2504	D244

CONTENTS:

1. SMBv2/v3 Specifications for Ricoh Devices	1
2. Limitations	3
3. Required Firmware	3

1. SMBv2/v3 Specifications for Ricoh Devices

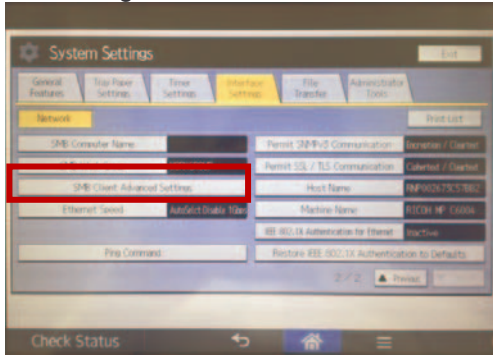
Ricoh devices support the following protocols:

- SMB1.0/CIFS
- SMB2.0/2.1
- SMB3.0

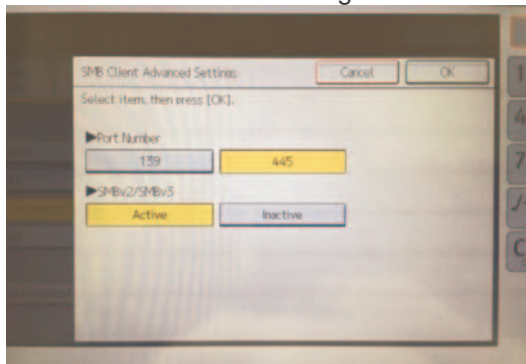
continued...

Additional Features:

New settings have been added for SMBv2/v3:



SMB Client Advanced Setting:



- The SMB client port number can be set to either 139 or 445 (default).
- SMBv2/v3 support can be enabled (default) or disabled.
- If SMBv2/v3 is disabled, the device uses the SMBv1 protocol before the firmware upgrade.
- Access these settings via User Tools on the operation panel, or Web Image Monitor.

Specification Changes:

- New settings will be applied automatically when the device firmware is updated.
 - SMBv2/SMBv3 will be set to **Active**.
 - SMB Client Port Number will be set to **445** (even if SMB was already enabled on port 139).
- The default SMB client port has been changed from 139/tcp to 445/tcp due to cases reported where Windows OS does not accept connections on port 139 following the application of certain security measures.
 - Reference URL: <https://support.microsoft.com/en-us/kb/3161949>

Functions using SMBv2/v3:

The following functions can now operate using SMBv2/v3:

- A. **Scan to Folder**
- B. FAX reception with folder transfer
 - Specify an address registered in the address book and then transfer a copy of received data to that folder using SMBv2/v3.
- C. FAX transmission with folder backup
 - When sending a fax, also store a copy of sent data to a folder using SMBv2/v3.
- D. Store to HDD with folder transfer
 - Store scanned data and then transfer a copy of stored data to a folder using SMBv2/v3.

continued...

2. Limitations

The SMB version used for Windows authentication is SMBv1. Please use LDAP authentication instead as necessary.

- The SMB version used for SMB printing is SMBv1.
- Plaintext authentication and LM authentication are not supported with SMBv2/v3.
- In some environments SMBv3 encrypted communication using port 139/tcp is not supported because Windows OS does not support it. The default port setting in the device has been changed to 445/tcp, so there should be no issue.
- Addressing in CNAME using port 139/tcp is not supported. However, it is now supported by port 445/tcp.
- Writing only supports synchronous transfer, and even if set to asynchronous transfer, the device will still perform synchronous transfer.

3. Required firmware

Support for SMBv2/v3 is dependent on each of the following firmware modules. Please be sure to update all of them:

- System/Copy
- Network Support
- Scanner
- Web Support
- Animation

The table below lists the minimum firmware versions required to enable SMBv2/v3 support for each model. Additional information will be provided separately regarding the requirements for other models.

Product Name	System/Copy	Network Support	Scanner	Web Support	Animation
MP C2004ex MP C2504ex MP C3004ex MP C3504ex	v1.04.1 D0AD5550C	v15.64 D0AD5567D	v01.02 D0AD5560B	v1.02 D0AD5561B	Animation v1.02 D0AD5564B
MP C4504ex MP C6004ex	v1.04.1 D0AF5550C	v15.64 D0AF5567D	v01.02 D0AF5560B	v1.02 D0AF5561B	Animation v1.02 D0AF5564B
MP C2004 MP C2504 MP C3004 MP C3504	v1.15 D2395550X	v15.64 D2395567Q	v01.08 D2395560M	v1.08 D2395561K	Animation v1.05 D2395564J
MP C4504 MP C6004	v1.15 D2425550X	v15.64 D2425567Q	v01.08 D2425560M	v1.08 D2425561K	Animation v1.05 D2425564J

Links to the bundled firmware to support SMBv2 and SMBv3

MP C2004ex, MP C2504ex, MPC3004ex, MP C3504ex

SDcard: http://rfg-esource/nj03ntas02/groups/public/documents/standard_check-in/rfg076811.zip

Remote: http://rfg-esource/nj03ntas02/groups/public/documents/standard_check-in/rfg076810.zip

MP C4504ex, MP C6004ex

SDcard: http://rfg-esource/nj03ntas02/groups/public/documents/standard_check-in/rfg076812.zip

Remote: http://rfg-esource/nj03ntas02/groups/public/documents/standard_check-in/rfg076813.zip

continued...

MP C2004, MP C2504, MPC3004, MP C3504

SDcard: http://rfg-esource/nj03ntas02/groups/public/documents/standard_check-in/rfg076818.zip

Remote: http://rfg-esource/nj03ntas02/groups/public/documents/standard_check-in/rfg076813.zip

MP C4504, MP C6004

SDcard: http://rfg-esource/nj03ntas02/groups/public/documents/standard_check-in/rfg076820.zip

Remote: http://rfg-esource/nj03ntas02/groups/public/documents/standard_check-in/rfg076819.zip

The Animation firmware might not be included in the "Package All" firmware. If these firmwares are not updated, the SMBv2/v3 setting will not be displayed in User Tools on the Operation Panel but it may still be displayed on Web Image Monitor.

When carrying out the firmware update via ARFU etc., please confirm that the above firmwares are updated to the version that supports SMBv2/v3.

 **Note**

- SMB v2/v3 support will be available for other models. The announcement will be issued separately. Please select the What's New tab on the TSRC website.